

Internet radio (shoutcast) installation

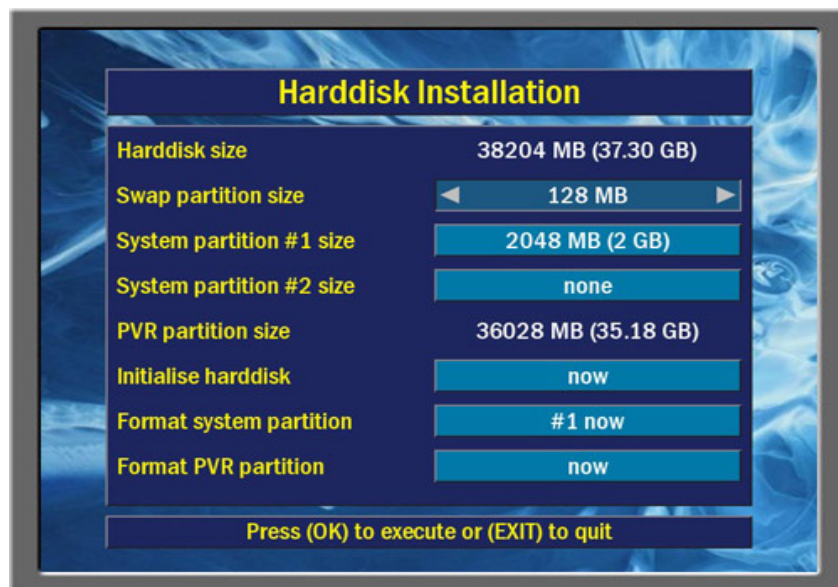
1.1 For USB

If you don't have harddisk in your Triple Dragon box, you can install this plugins on **USB**. Format your **USB stick** to **FAT16** system on PC and create **plugins** directory. After that, copy plugins to this directory, **restart Box** and **connect** USB stick to Triple Dragon box. After reboot, plugins should be installed in **Menu -> Extras**. Now jump to [point 2](#) for next installation step.

1.2 For Harddisk

If you have system partition on hdd , you can jump to point [1.2a](#).

To install plugin on **hdd**, you must have system partition on your harddisk. To create system partition press: Menu button, then go to: System setup -> more system setup -> harddisk -> Installation. On TV should be this picture.



For Europe don't create Swap partition size (isn't needed) so, set to none with using **arrow LEFT,RIGHT** button on remote control. Now go to **System partition #1 size** option by using **arrow DOWN** button and select size for partition with using **arrow LEFT,RIGHT** button. On my harddisk, I set 2048 MB. Option **System partition #2 size**, set to none. Now you have set all partition on harddisk. Go to **Initialise harddisk** option and press **OK** button. Box asking: whether initialise harddisk and confirm with using **RED** button. When initialising will be done, press **OK** button to confirm. Now system partition is create on harddisk.

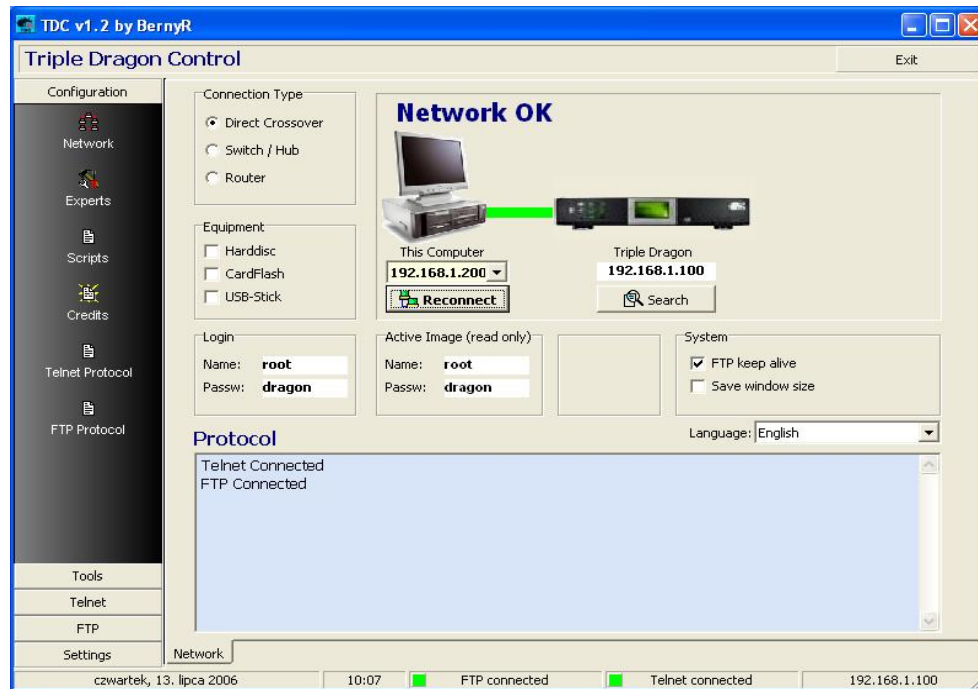
Attention: Operation Initialise harddisk, delete all data on your harddisk !!

Open FTP program with you use to copy data. I prefer TDC and this description is write for this program.

1.2a Start TDC program

- connect direct TD/PC with using crossover cable

In option “**Connection Type**” select **Direct crossover**



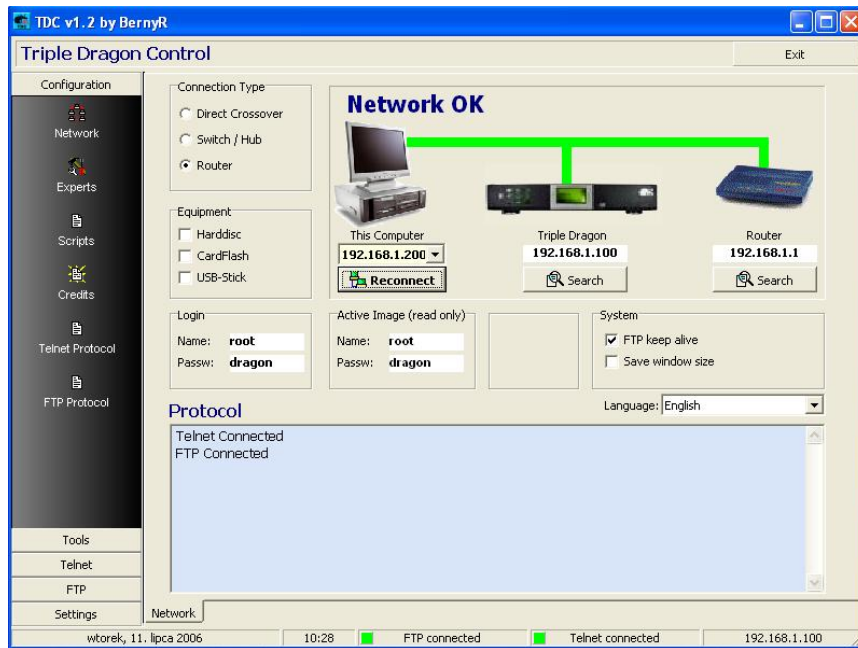
Below inscription “ **This Computer** ” select your PC IP however below inscription “ **Triple Dragon** ” enter TD IP.

In section **Login** and **Active image**, enter Name and Password for connect TDC with TD (if you don’t change TD password, enter **dragon**)

Now press **Connect/Reconnect** button and you should get inscription **Network OK**.

- Network connect with using Router

In option “**Connection Type**” select **Router**

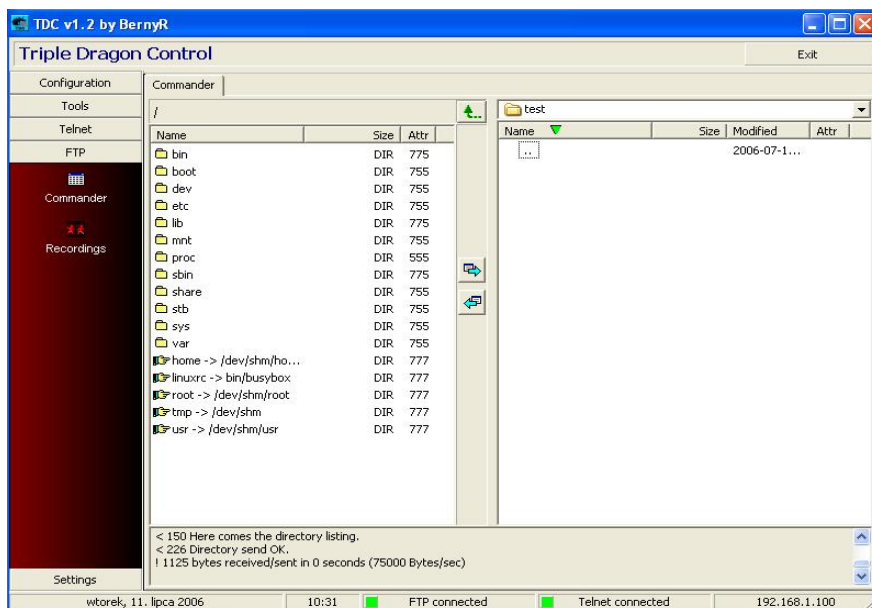


Below inscription “ **This Computer**” select your PC IP, below inscription “ **Triple Dragon**” enter TD IP however below **Router** inscription enter router IP.

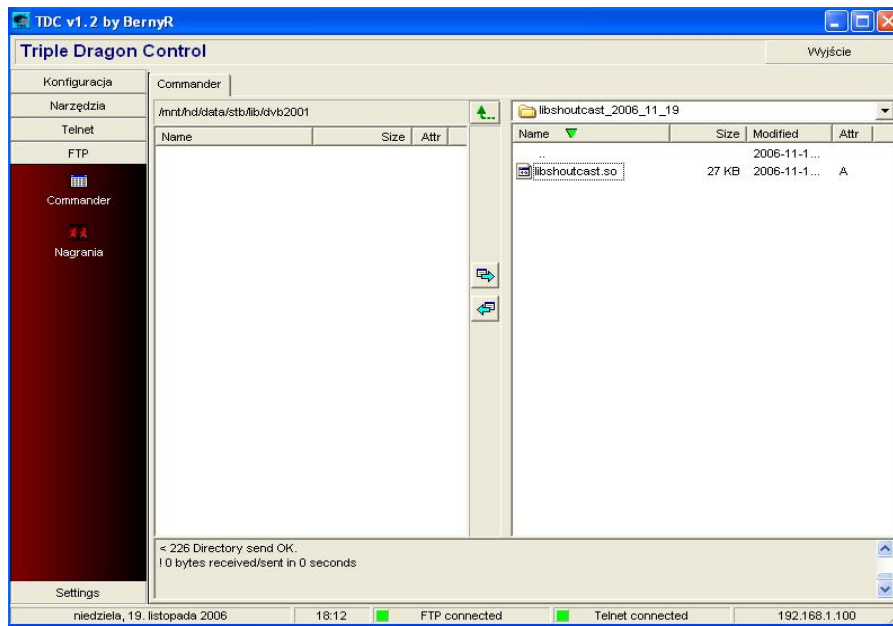
In section **Login** and **Active image**, enter Name and Password for connect TDC with TD (if you don’t change TD password, enter **dragon**)

Now press **Connect/Reconnect** button and you should get inscription **Network OK**.

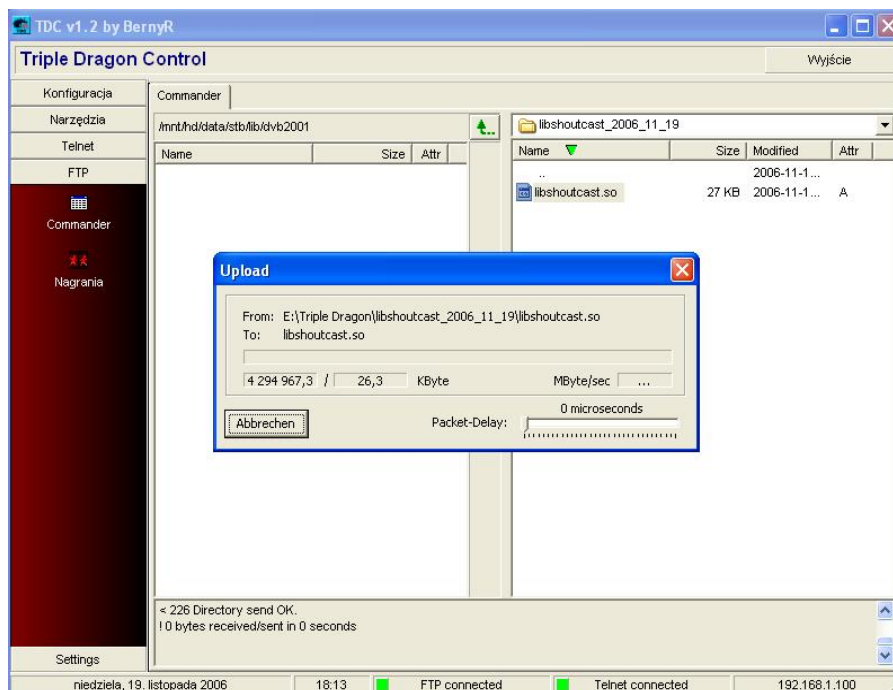
Go to **FTP** bookmark and you see folder list.



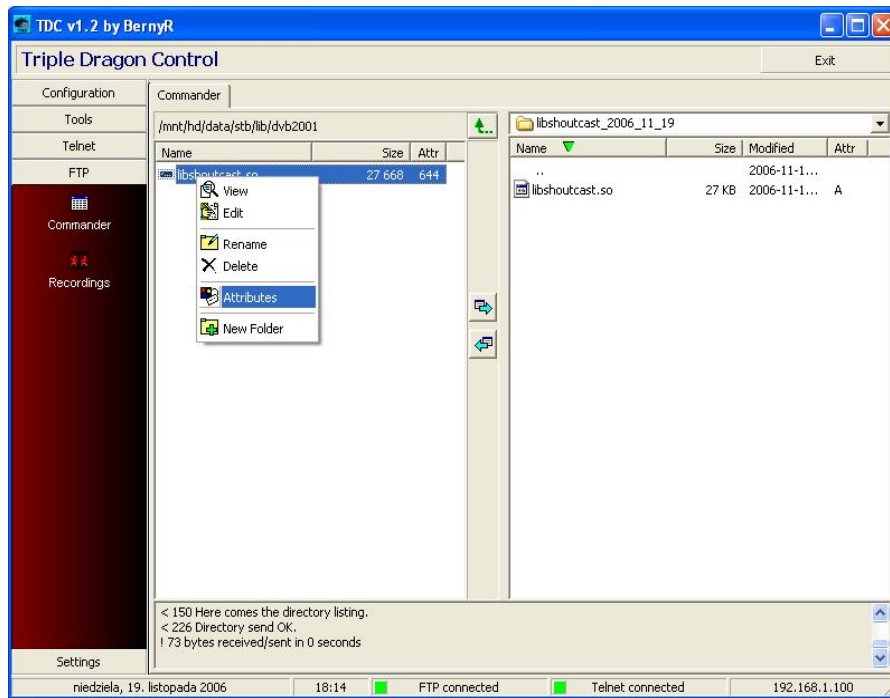
Now go to: `/mnt/hd/data/stb/lib/dvb2001` directory



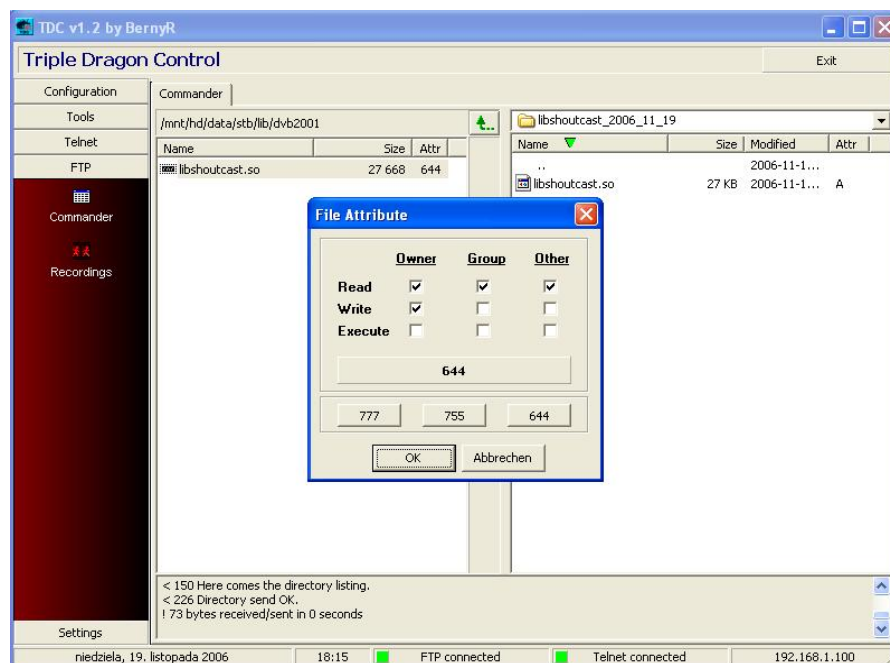
Select plugin, which you want to copy and press **green** arrow left button.



Now press **right mouse** button on plugin, which you copy on hdd and select **Attributes** option.



Press **left mouse button** on 755 bookmark and **OK**.



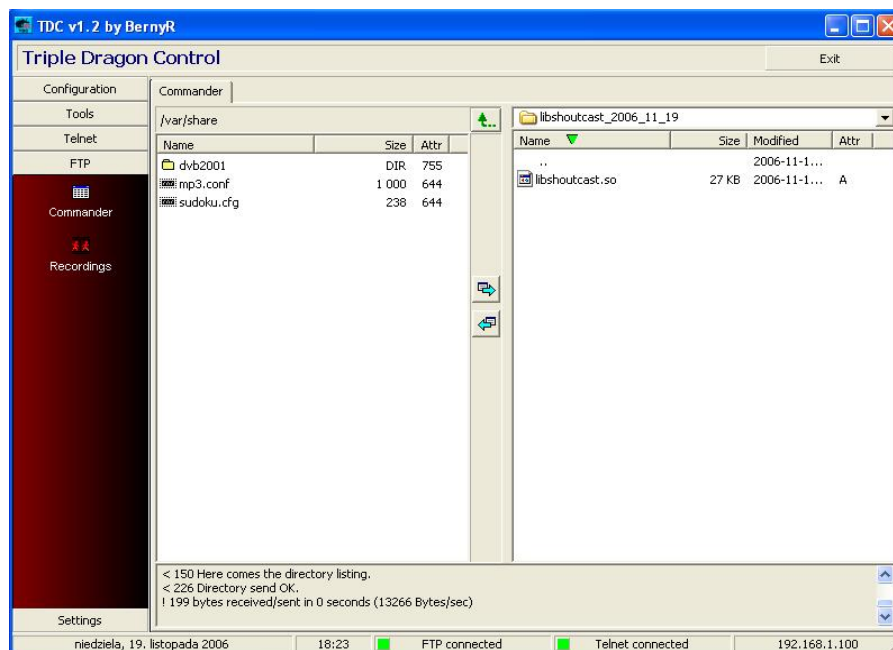
Now **restart box** and plugin should be installed in **Menu -> Extras**.

2. Start and plugin configuration

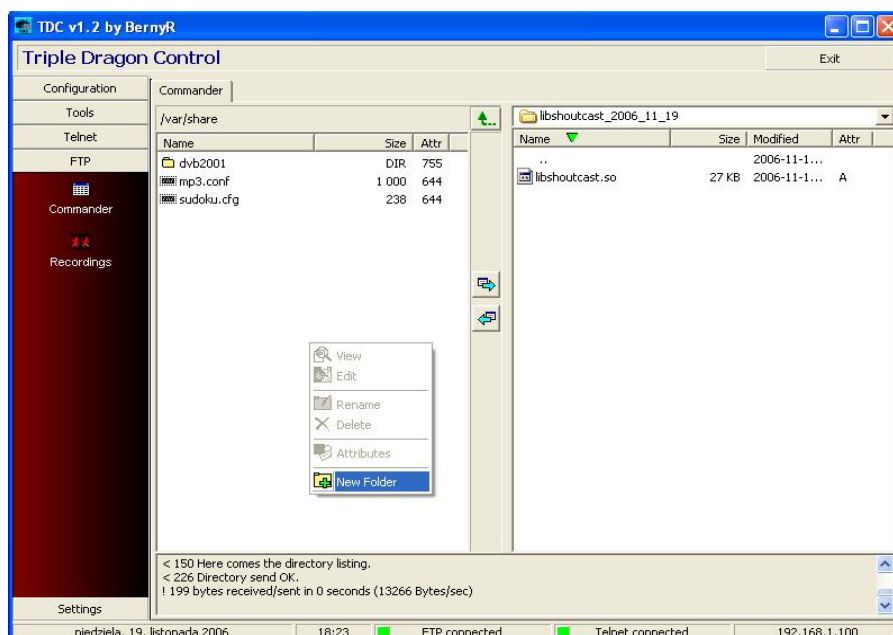
Internet radio (shoutcast) plugin working only on the last official image from November 2006.

Very important is before you start shoutcast player from Menu -> Extras, installing **list_shoutcast.txt** file in **/var/share/shoutcast** directory.

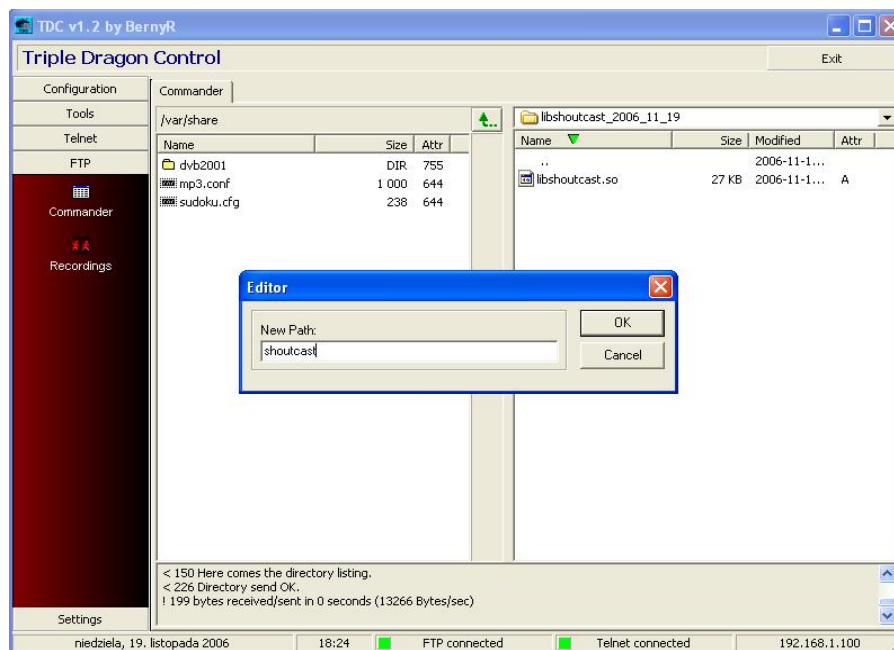
Go to **/var/share** directory in TDC



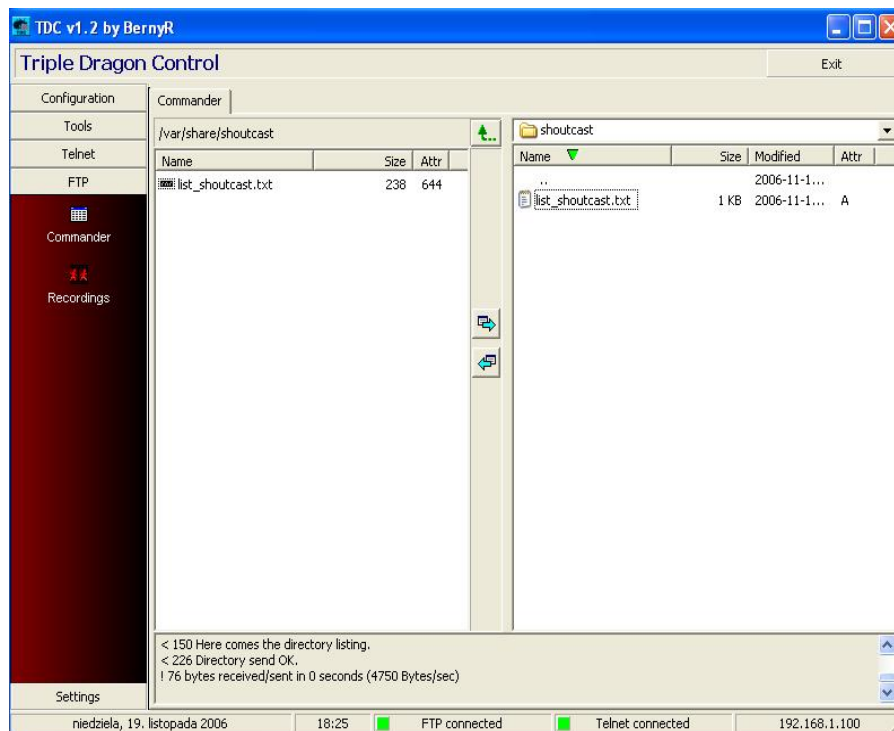
Now press **right mouse button** and select **New Folder** option.



Enter **shoutcast** directory name and **OK**.

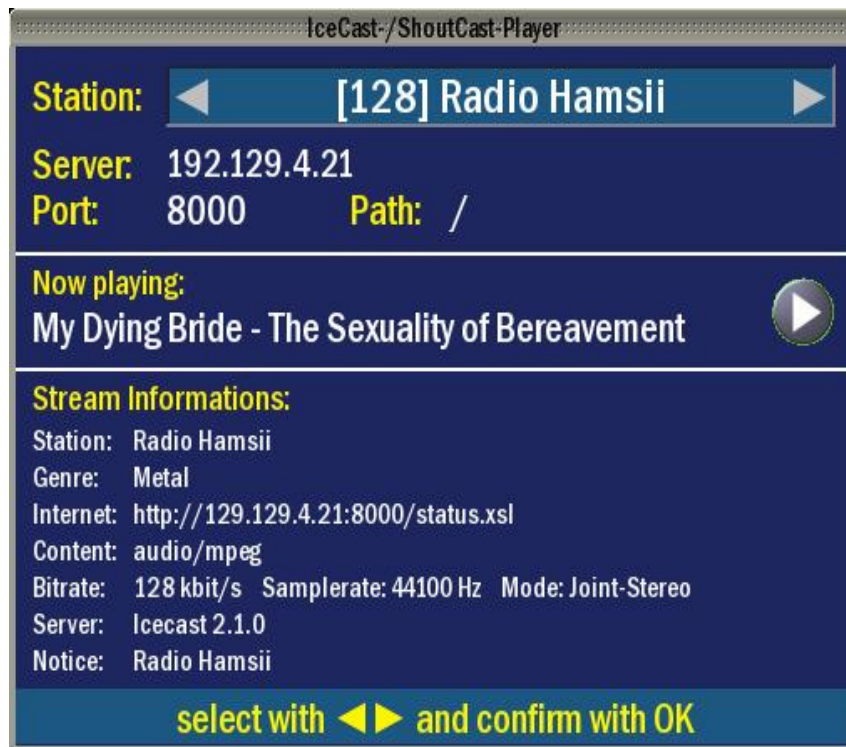


Now copy to this directory file: **list_shoutcast.txt**



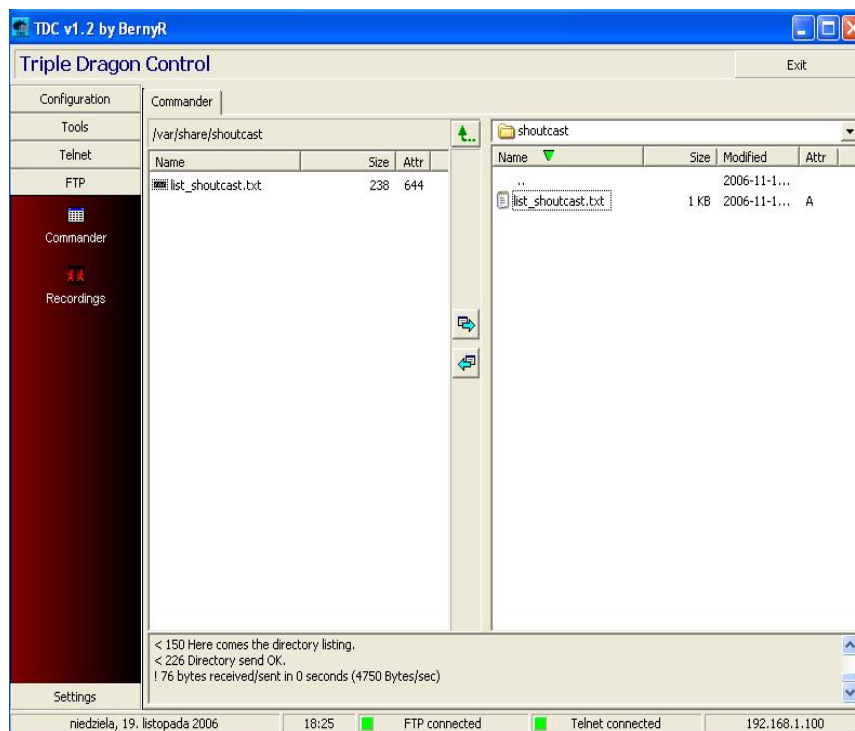
Restart Box

After restart go to **Menu -> Extras** directory and start **shoutcast player**.

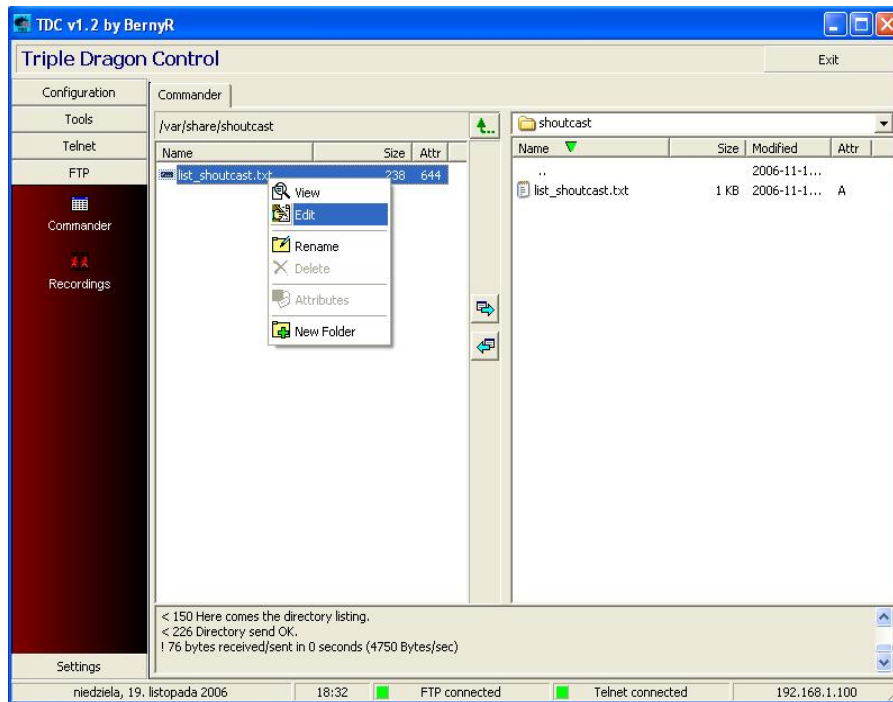


3. Add radio station to list_shoutcast.txt

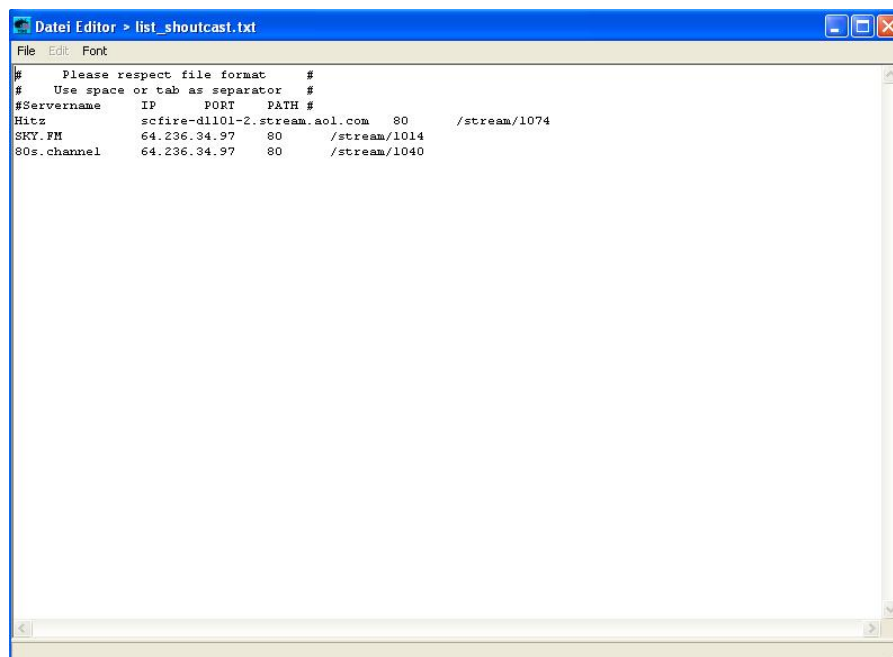
Start TDC program and go to `/var/share/shoutcast` directory.



Now press on file name **right mouse** button and select **Edit** option.



At this moment **TDC** open this file and you can **add** new radio station.



Very important are file **rules**:

- 1 part entry**: radio station name, after name press one **Tab** button on keyboard
- 2 part entry**: IP/URL address of station, after IP/URL press one **Tab** button on keyboard
- 3 part entry**: station port, after port press one **Tab** button on keyboard
- 4 part entry**: stream, if stream isn't needed enter only /

When new entry is added, press **left mouse** button on **File** bookmark, then select **Save & Exit** option and **restart** your box.

